



Tankerton, Whitstable

Walton House, 4 Baliol Road, Tankerton, Whitstable, Kent, CT5 2EN

Walton House is an attractive and substantial Edwardian family home enjoying a much sought after and highly convenient location. Situated equally between the shops and cafes of Whitstable's Harbour Street and Tankerton Slopes, the seafront and the train station are only 5 minutes walk away. The area has excellent local schooling options.

This charming, well presented, period home provides 2046 sq ft (190 sq m) of generously proportioned accommodation. The spacious ground floor is arranged to provide an entrance hall, sitting room, family room with patio access, an exceptional bright and airy kitchen/dining room, utility, cloakroom and integrated garage with development potential (subject to obtaining all necessary consents and approvals). To the first floor there are four bedrooms and two bathrooms, including an en-suite shower room to the principal bedroom.

The established South West facing garden is thoughtfully planted with shrubs and mature fruit trees, and features a protected, sunny paved terrace which is ideal for outside entertaining. A shingled driveway to the front of the house provides an area of off-street parking with access to the integral garage and a side gate entrance to the garden. Walton House has no onward chain.

Location

Baliol Road is a much sought after road on the border of Tankerton and Whitstable, conveniently positioned for access to local shopping and educational facilities, the seafront and bus routes. Mainline railway services are available at Whitstable station (0.4 of a mile distant), offering fast and frequent services to London (Victoria approximately 80mins) with high speed links to London St Pancras (approximately 73mins) and the A299 is also easily accessible linking with the A2/ M2 providing access to the channel ports and subsequent motorway network.

Whitstable's fashionable and charming town centre boasts an array of delicatessens, restaurants and boutique shops. Just moments from the town centre you can meander through the town's historic alleyways leading to Whitstable's beautiful coastline and working harbour with fish markets. Located between Whitstable and Tankerton is Whitstable Castle which is a popular attraction offering a wide range of social and cultural events along with its now celebrated 'Regency' style gardens. A short stroll up Tower Hill will take you to Tankerton slopes and the Castle Tea Gardens where you can enjoy stunning sea views over Whitstable Bay and the Isle of Sheppey.

Accommodation

The accommodation and approximate measurements are:

GROUND FLOOR

- **Entrance Hall**
18'8" x 8'9" (5.69m x 2.67m)
at maximum points.
- **Sitting Room**
12'0" x 11'11" (3.66m x 3.63m)
at maximum points.
- **Family Room**
12'10" x 11'5" (3.90m x 3.49m)
at maximum points.
- **Kitchen/Dining Room**
22'4" x 18'5" (6.80m x 5.62m)
at maximum points.
- **Utility Room**
11'4" x 7'0" (3.45m x 2.13m)
at maximum points.

Cloakroom

8'9" x 3'8" (2.67m x 1.12m)
at maximum points.

FIRST FLOOR

- **Bedroom 1**
12'7" x 12'6" (3.84m x 3.81m)
at maximum points.
- **En-Suite Shower Room**
8'9" x 6'3" (2.67m x 1.91m)
at maximum points.
- **Bedroom 2**
12'0" x 12'0" (3.65m x 3.67m)
at maximum points.
- **Bedroom 3**
12'10" x 11'5" (3.91m x 3.47m)
at maximum points.
- **Bedroom 4**
9'7" x 8'6" (2.92m x 2.58m)
at maximum points.

Bathroom

11'7" x 8'11" (3.53m x 2.72m)
at maximum points.

OUTSIDE

- **Garage**
15'1" x 8'7" (4.60m x 2.62m)
at maximum points.
- **Garden**
56' x 37' (17.07m x 11.28m)
at maximum points.

Video Tour Available

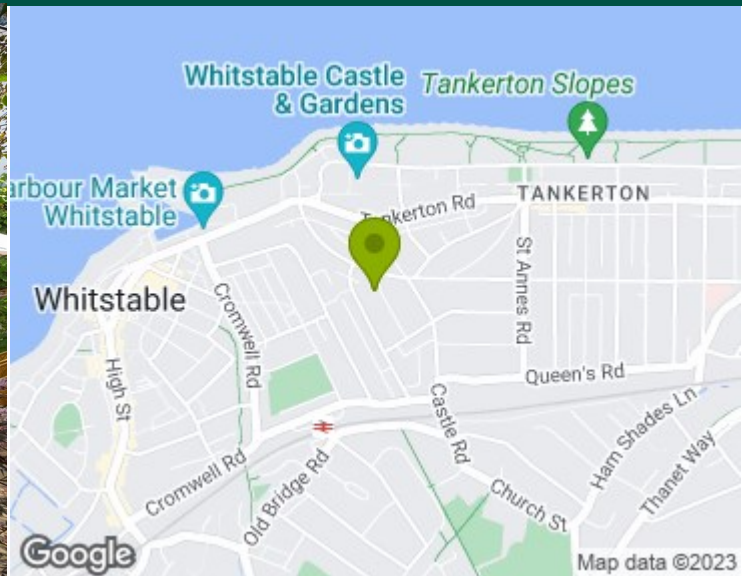
Please view the video tour for this property, and contact us to discuss arranging a viewing.











Viewing

STRICTLY BY PRIOR APPOINTMENT WITH CHRISTOPHER HODGSON ESTATE AGENTS

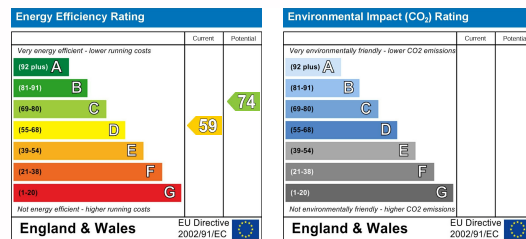
95/97 Tankerton Road . Whitstable
Kent CT5 2AJ

t: 01227 266441
f: 01227 266443
e: sales@christopherhodgson.co.uk

www.christopherhodgson.co.uk

Christopher Hodgson Estate Agents for itself and as agent for the vendor or lessor (as appropriate) gives notice that: 1 These particulars are only a general outline for the guidance of intending purchasers or lessees and do not constitute in whole or in part an offer or a Contract. 2 Reasonable endeavours have been made to ensure that the information given in these particulars is materially correct but any intending purchaser or lessee should satisfy themselves by inspection, searches, enquiries and survey as to the correctness of each statement. 3 All statements in these particulars are made without responsibility on the part of Christopher Hodgson Estate Agents or the vendor or lessor. 4 No statement in these particulars is to be relied upon as a statement or representation of fact. 5 Neither Christopher Hodgson Estate Agents nor anyone in its employment or acting on its behalf has authority to make any representation or warranty in relation to this property. 6 Nothing in these particulars shall be deemed to be a statement that the property is in good repair or condition or otherwise nor that any services or facilities are in good working order. 7 Photographs may show only certain parts and aspects of the property at the time when the photographs were taken and you should rely upon actual inspection. 8 No assumption should be made in respect of parts of the property not shown in photographs. 9 Any areas, measurements or distances are only approximate. 10 Any reference to alterations or use is not intended to be a statement that any necessary planning, building regulation, listed building or any other consent has been obtained. 11 Amounts quoted are exclusive of VAT if applicable. 12 Whilst reasonable endeavours have been made to ensure the accuracy of any floor plan contained in these particulars, all measurements and areas are approximate and no responsibility is taken for any error, omission or mis-statement. This plan is for illustrative purposes only and should be used as such by any prospective purchaser. 13 Any mapping contained within these particulars is for illustrative purposes only and should be used as such by any prospective purchaser. No responsibility is taken for any error, omission or mis-statement. 14 Any computer generated images contained within these particulars are for illustrative purposes only and should be used as such by any prospective purchaser.

Energy Performance Certificate



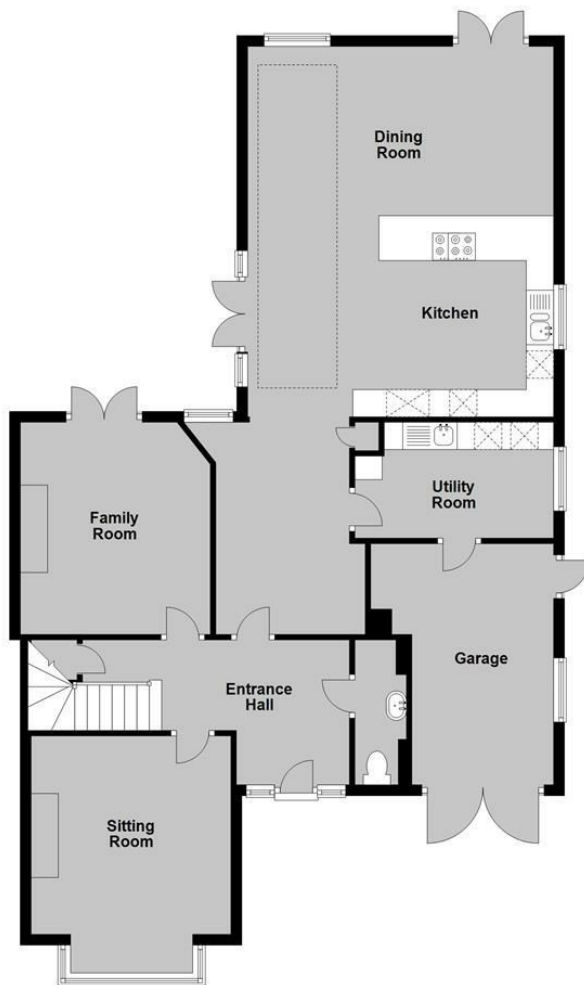
Folio No. 6937/WR





Ground Floor

Approx. 114.4 sq. metres (1231.8 sq. feet)



First Floor

Approx. 75.7 sq. metres (814.4 sq. feet)



Total area: approx. 190.1 sq. metres (2046.1 sq. feet)

...for Coastal, Country & City living.



• 95/97 Tankerton Road . Whitstable . Kent CT5 2AJ . t: 01227 266441 . f: 01227 266443 . e: sales@christopherhodgson.co.uk

www.christopherhodgson.co.uk